



B Series

ABT BEARING

Ball Thrust Bearing

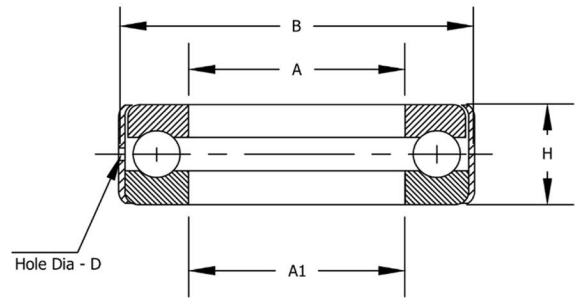
Inch Dimensions

Flat Seat

Single Acting

Grooved Races

Banded



| BEARING NUMBER | A +.002 -.000 | A ¹ +.010 -.010 | B +.000 -.003 | H +.005 -.005 | BALLS | | LOAD RATING (lbs.) | | SPEED LIMIT | BEARING WEIGHT Lbs. |
|----------------|---------------------|----------------------------------|---------------------|---------------------|-------|------|-----------------------|---------|-------------|------------------------|
| | | | | | No. | SIZE | Static | Dynamic | | |
| B1 | .503 | .531 | 1.219 | .625 | 10 | 1/4 | 3993 | 775 | 3650 | .130 |
| B2 | .566 | .594 | 1.219 | .625 | 10 | 1/4 | 3993 | 775 | 3650 | .126 |
| B3 | .628 | .656 | 1.344 | .625 | 12 | 1/4 | 4792 | 829 | 3500 | .156 |
| B4 | .691 | .719 | 1.344 | .625 | 12 | 1/4 | 4792 | 829 | 3500 | .142 |
| B5 | .753 | .781 | 1.469 | .625 | 13 | 1/4 | 5191 | 855 | 3350 | .164 |
| B6 | .816 | .844 | 1.469 | .625 | 13 | 1/4 | 5191 | 855 | 3350 | .157 |
| B7 | .878 | .906 | 1.844 | .750 | 14 | 5/16 | 8736 | 1317 | 2750 | .342 |
| B8 | .941 | .969 | 1.844 | .750 | 14 | 5/16 | 8736 | 1317 | 2750 | .319 |
| B9 | 1.003 | 1.031 | 1.969 | .750 | 12 | 3/8 | 10778 | 1722 | 2700 | .361 |
| B10 | 1.066 | 1.094 | 1.969 | .750 | 12 | 3/8 | 10778 | 1722 | 2700 | .342 |
| B11 | 1.128 | 1.156 | 2.094 | .750 | 13 | 3/8 | 11677 | 1774 | 2500 | .400 |
| B12 | 1.191 | 1.219 | 2.094 | .750 | 13 | 3/8 | 11677 | 1774 | 2500 | .380 |
| B13 | 1.253 | 1.281 | 2.344 | .750 | 15 | 3/8 | 13473 | 1779 | 2350 | .494 |
| B14 | 1.316 | 1.344 | 2.344 | .750 | 15 | 3/8 | 13473 | 1779 | 2350 | .480 |
| B15 | 1.378 | 1.406 | 2.469 | .750 | 16 | 3/8 | 14371 | 1912 | 2300 | .525 |
| B16 | 1.441 | 1.469 | 2.469 | .750 | 16 | 3/8 | 14371 | 1912 | 2300 | .513 |
| B17 | 1.503 | 1.531 | 2.594 | .750 | 17 | 3/8 | 15269 | 1958 | 2275 | .562 |
| B18 | 1.566 | 1.594 | 2.594 | .750 | 17 | 3/8 | 15269 | 1958 | 2275 | .544 |
| B19 | 1.628 | 1.656 | 2.969 | .875 | 16 | 7/16 | 19570 | 2527 | 1950 | .900 |
| B20 | 1.691 | 1.719 | 2.969 | .875 | 16 | 7/16 | 19570 | 2527 | 1950 | .875 |
| B21 | 1.753 | 1.781 | 3.094 | .875 | 17 | 7/16 | 20793 | 2580 | 1900 | .969 |
| B22 | 1.816 | 1.844 | 3.09 | .875 | 17 | 7/16 | 20793 | 2580 | 1900 | .925 |
| B23 | 1.878 | 1.906 | 3.219 | .875 | 18 | 7/16 | 22016 | 2646 | 1850 | 1.013 |
| B24 | 1.941 | 1.969 | 3.219 | .875 | 18 | 7/16 | 22016 | 2646 | 1850 | .963 |
| B25 | 2.003 | 2.031 | 3.344 | .875 | 19 | 7/16 | 23239 | 2701 | 1825 | 1.670 |



Materials: Rings and balls are constructed of thru-hardened 52100 steel. Band is constructed of high quality low carbon steel.

Bearings are supplied with light oil lubrication. Grease lubrication is available upon request and subject to minimums and production lead times.

ABT Bearing, Inc. 345 Production Drive, South Elgin, IL 60177

PH 800-931-1860 FAX 847-931-9411 info@abtbearing.com

www.abtbearing.com