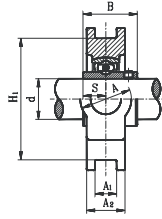
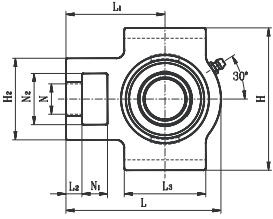


TAKE UP UNITS

UCT STANDARD DUTY SET SCREW LOCKING TYPE - NARROW SLOT



- Cast iron housing - narrow slot
- Wide inner ring bearing

Unit No.	Shaft Dia. d (in.) (mm)	Dimensions (in) (mm)															Bearing No.	Housing No.	Weight (lb)	
		N1	L2	H2	N2	N	L3	A1	H1	H	L	A	A2	L1	B	S				
UCT201S 201-8S 202S 202-10S 203S 203-11S	12 1/2 15 5/8 17 11/16																	UC201S 201-8S 202S 202-10S 203S 203-11S	T203	1.50
UCT201 201-8 202 202-10 203 203-11 204-12 204	12 1/2 15 5/8 17 11/16 3/4 20																	UC201 201-8 202 202-10 203 203-11 204-12 204	T204	1.80
UCT205-14 205-15 205 205-16	7/8 15/16 25 1	5/8 16	13/32 10	2 51	1-1/4 32	3/4 19	2 51	15/32 12	3 76	3-1/2 89	3-13/16 97	1-1/4 32	15/16 24	2-7/16 62	1-11/32 34.0	9/16 14.3	UC205-14 205-15 205 205-16	T205	1.90	
UCT206-18 206 206-19 206-20	1-1/8 30 1-3/16 1-1/4	5/8 16	13/32 10	2-7/32 56	1-15/32 37	7/8 22	2-1/4 57	15/32 12	3-1/2 89	4-1/32 102	4-7/16 113	1-15/32 37	1-3/32 28	2-3/4 70	1-1/2 38.1	5/8 15.9	UC206-18 206 206-19 206-20	T206	2.90	
UCT207-20 207-21 207-22 207 207-23	1-1/4 1-5/16 1-3/8 35 1-7/16	5/8 16	1/2 13	2-17/32 64	1-15/32 37	7/8 22	2-17/32 64	15/32 12	3-1/2 89	4-1/32 102	5-3/32 129	1-15/32 37	1-3/16 30	3-1/16 78	1-11/16 42.9	11/16 17.5	UC207-20 207-21 207-22 207 207-23	T207	3.70	
UCT208-24 208-25 208	1-1/2 1-9/16 40	3/4 19	5/8 16	3-9/32 83	1-15/16 49	1-5/32 29	3-1/4 83	5/8 16	4-1/32 102	4-1/2 114	5-11/16 144	1-15/16 49	1-5/16 33	3-15/32 88	1-15/16 49.2	3/4 19.0	UC208-24 208-25 208	T208	5.50	
UCT209-26 209-27 209-28 209	1-5/8 1-11/16 1-3/4 45	3/4 19	5/8 16	3-9/32 83	1-15/16 49	1-5/32 29	3-1/4 83	5/8 16	4-1/32 102	4-5/8 117	5-11/16 144	1-15/16 49	1-3/8 35	3-7/16 87	1-15/16 49.2	3/4 19.0	UC209-26 209-27 209-28 209	T209	5.50	
UCT210-30 210-31 210	1-7/8 1-15/16 50	3/4 19	5/8 16	3-9/32 83	1-15/16 49	1-5/32 29	3-3/8 86	5/8 16	4-1/32 102	4-5/8 117	5-7/8 149	1-15/16 49	1-15/32 37	3-9/16 90	2-1/32 51.6	3/4 19.0	UC210-30 210-31 210	T210	5.70	
UCT211-32 211-34 211 211-35	2 2-1/8 55 2-3/16	1 25	3/4 19	4-1/32 102	2-17/32 64	1-3/8 35	3-3/4 95	7/8 22	5-1/8 130	5-3/4 146	6-23/32 171	2-17/32 64	1-1/2 38	4-3/16 106	2-3/16 55.6	7/8 22.2	UC211-32 211-34 211 211-35	T211	8.80	
UCT212-36 212 212-38 212-39	2-1/4 60 2-3/8 2-7/16	1-1/4 32	3/4 19	4-1/32 102	2-17/32 64	1-3/8 35	4-1/32 102	7/8 22	5-1/8 130	5-3/4 146	7-21/32 194	2-17/32 64	1-21/32 42	4-11/16 119	2-9/16 65.1	1 25.4	UC212-36 212 212-38 212-39	T212	10.80	
UCT213-40 213	2-1/2 65	1-1/4 32	27/32 21	4-3/8 111	2-3/4 70	1-5/8 41	4-25/32 121	1-1/32 26	5-15/16 151	6-19/32 167	8-13/16 224	2-3/4 70	1-3/4 44	5-13/32 137	2-9/16 65.1	1 25.4	UC213-40 213	T213	15.40	
UCT214-44 214	2-3/4 70	1-1/4 32	27/32 21	4-3/8 111	2-3/4 70	1-5/8 41	4-25/32 121	1-1/32 26	5-15/16 151	6-19/32 167	8-13/16 224	2-3/4 70	1-13/16 46	5-13/32 137	2-15/16 74.6	1-3/16 30.2	UC214-44 214	T214	15.74	
UCT215 215-48	75 3	1-1/4 32	27/32 21	4-3/8 111	2-3/4 70	1-5/8 41	4-25/32 121	1-1/32 26	5-15/16 151	6-19/32 167	9-1/8 232	2-3/4 70	1-29/32 48	5-1/2 140	3-1/16 77.8	1-5/16 33.3	UC215 215-48	T215	16.50	
UCT216	80	1-1/4 32	27/32 21	4-3/8 111	2-3/4 70	1-5/8 41	4-25/32 121	1-1/32 26	6-1/2 165	7-1/4 184	9-1/4 235	2-3/4 70	2 51	5-1/2 140	3-1/4 82.6	1-5/16 33.3	UC216	T216	18.00	
UCT217-52 217	3-1/4 85	1-1/2 38	1-5/32 29	4-7/8 124	2-7/8 73	1-29/32 48	6-3/16 157	1-3/16 30	6-13/16 173	7-13/16 198	10-1/4 260	1-7/8 73	2-1/8 54	6-3/8 162	3-3/8 85.7	1-11/32 34.1	UC217-52 217	T217	24.30	

* Dual seal standard. Triple lip seal (R3 suffix) optional.



www.abtbearing.com • 1-800-931-1860