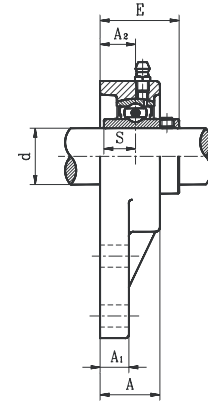
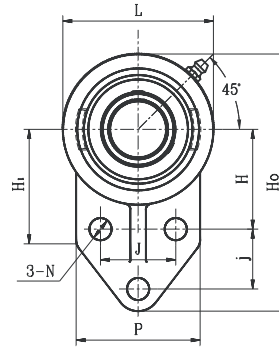


# FLANGE BRACKET UNITS

## UCFB STANDARD DUTY SET SCREW LOCKING TYPE



- Cast iron housing
- Wide inner ring bearing

Unit No.	Shaft Dia. d	Dimension (in) (mm)													Bolt Size (in)	Bearing No.	Housing No.	Weight (lb)	
		H <sub>0</sub>	L	H <sub>1</sub>	P	H	j	J	A	A <sub>1</sub>	A <sub>2</sub>	N	E	S					
UCFB201S 201-8S 202S 202-10S 203S 203-11S	1/2 5/8 11/16	12 15 17	4-3/32 104	2-5/32 55	1-31/32 50	1-15/16 49	1-19/32 40	1-1/16 27	1-3/16 30	15/16 23.5	13/32 10	9/16 14	13/32 10	1-3/16 29.9	7/16 11.5	5/16	UC201S 201-8S 202S 202-10S 203S 203-11S	FB203	0.93
UCFB201 201-8 202 202-10 203 203-11 204-12 204	1/2 5/8 11/16 3/4	12 15 17 20	4-5/16 109	2-3/8 60	2-1/16 52	2-1/16 52	1-21/32 42	1-1/16 27	1-1/4 32	1 25.5	7/16 11	19/32 15	13/32 10	1-5/16 33.0	1/2 12.7	5/16	UC201 201-8 202 202-10 203 203-11 204-12 204	FB204	1.43
UCFB205-14 205-15 205 205-16	7/8 15/16 1	12 25	4-9/16 116	2-11/16 68	2-1/16 52	2-7/32 56	1-25/32 45	1-1/16 27	1-11/32 34	1-1/16 27.0	1/2 13	5/8 16	13/32 10	1-13/32 35.7	9/16 14.3	5/16	UC205-14 205-15 205 205-16	FB205	1.52
UCFB206-18 206 206-19 206-20	1-1/8 1-3/16 1-1/4	30	5-3/16 132	3-5/32 80	2-5/32 55	2-9/16 65	1-31/32 50	1-5/32 29	1-19/32 40	107/32 31.0	1/2 13	23/32 18	13/32 10	1-19/32 40.2	5/8 15.9	5/16	UC206-18 206 206-19 206-20	FB206	2.05
UCFB207-20 207-21 207-22 207 207-23	1-1/4 1-5/16 1-3/8 1-7/16	35	5-11/16 144	3-9/16 90	2-7/16 62	2-3/4 70	2-5/32 55	1-1/4 32	1-13/16 46	1-5/16 33.0	9/16 14	3/4 19	13/32 10	1-3/4 44.4	11/16 17.5	5/16	UC207-20 207-21 207-22 207 207-23	FB207	2.90
UCFB208-24 208-25 208	1-1/2 1-9/16	40	6-15/32 164	3-15/16 100	2-27/32 72	3-1/16 78	2-3/8 60	1-5/8 41	1-31/32 50	1-3/8 35.0	11/16 17	27/32 21	15/32 12	2-1/32 51.2	3/4 19.0	3/8	UC208-24 208-25 208	FB208	4.00
UCFB209-26 209-27 209-28 209	1-5/8 1-11/16 1-3/4	45	6-29/32 175	4-1/4 108	3 76	3-5/32 80	2-9/16 65	1-11/16 43	2-1/8 54	1-1/2 38.0	5/8 16	7/8 22	15/32 12	1-1/16 52.2	3/4 19.0	3/8	UC209-26 209-27 209-28 209	FB209	4.40
UCFB210-30 210-31 210 210-32	1-7/8 1-15/16 2	50	7-1/4 184	4-1/2 114	3-7/32 82	3-3/8 86	2-11/16 68	1-13/16 46	2-9/32 58	1-17/32 39.0	5/8 16	7/8 22	15/32 12	2-5/32 54.6	3/4 19.0	3/8	UC210-30 210-31 210 210-32	FB210	5.10
UCFB211-32 211-34 211 211-35	2 2-1/8 2-3/16	55	8-3/16 208	5-1/32 128	3-3/8 86	3-17/32 90	3-1/16 78	1-31/32 50	2-7/16 62	1-11/16 42.5	23/32 18	1 25	9/16 14	2-5/16 58.4	7/8 22.2	1/2	UC211-32 211-34 211 211-35	FB211	6.60
UCFB212-36 212 212-38 212-39	2-1/4 2-3/8 2-7/16	60	8-13/16 224	5-1/2 140	3-9/16 90	3-23/32 94	3-5/16 84	2-5/32 55	2-19/32 66	1-7/8 47.5	3/4 19	1-5/32 29	9/16 14	2-23/32 68.7	1 25.4	1/2	UC212-36 212 212-38 212-39	FB212	8.40
UCFB213-40 213	2-1/2	65	9-5/8 244	6 152	3-3/4 95	4-1/32 102	3-5/8 92	2-3/8 60	2-3/4 70	1-15/16 49	25/32 20	1-3/16 30	9/16 14	2-3/4 69.7	1 25.4	1/2	UC213-40 213	FB213	10.50

\* Dual seal standard. Triple lip seal (R3 suffix) optional.



www.abtbearing.com • 1-800-931-1860