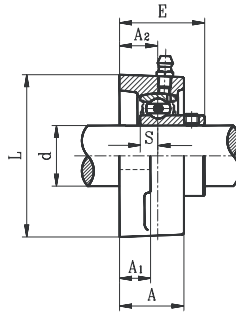
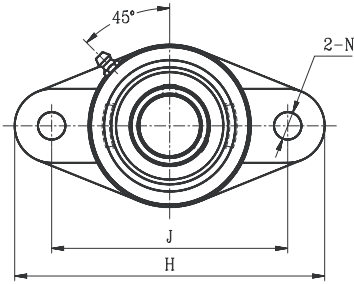


TWO BOLT FLANGE UNITS

SBFL LIGHT DUTY SET SCREW LOCKING TYPE



- Cast iron housing
- Narrow inner ring bearing

Unit No.	Shaft Dia. d		Dimension (in) (mm)									Bolt Size (in)	Bearing No.	Housing No.	Weight (lb)	
	(in.)	(mm)	H	J	L	A ₂	A ₁	A	E	N	S					
SBFL201G		12														
201-8G	1/2	15														
202G			3-29/32	3-1/32	2-1/4	19/32	7/16	31/32	1-1/4	15/32	1/4	3/8	SB201G	FL203	0.83	
202-10G	5/8	17	99	76.5	57	15	11	24.5	31	11.5	6.0		201-8G			
203G													202G			
203-11G	11/16												202-10G			
													203G			
													203-11G			
SBFL204-12G	3/4	20	4-15/32	3-9/16	2-3/8	19/32	7/16	1	1-5/16	15/32	9/32	3/8	SB204-12G	FL204	0.86	
204G			113	90	60	15	11	25.5	33	11.5	7.0		204G		0.82	
SBFL205-14G	7/8												SB205-14G		1.28	
205-15G	15/16	25	5-1/8	3-29/32	2-11/16	5/8	17/32	1-1/16	1-13/32	15/32	5/16	3/8	205-15G	FL205	1.28	
205G			130	99	68	16	13	27	35.5	11.5	7.5		205G		1.26	
205-16G	1												205-16G		1.23	
SBFL206-18G	1-1/8	30	5-27/32	4-5/8	3-5/32	23/32	17/32	1-1/4	1-19/32	15/32	5/16	3/8	SB206-18G	FL206	1.85	
206G			148	117	80	18	13	31	40	11.5	8.0		206G		1.88	
206-19G	1-3/16												206-19G		1.81	
206-20G	1-1/4												206-20G		1.79	
SBFL207-20G	1-1/4												SB207-20G		2.99	
207-21G	1-5/16	35	6-11/32	5-1/8	3-9/16	3/4	9/16	1-11/32	1-11/16	9/16	11/32	1/2	207-21G	FL207	2.97	
207-22G	1-3/8		161	130	90	19	14	34	42.5	14.0	8.5		207-22G		2.33	
207G													207G		2.27	
207-23G	1-7/16												207-23G		2.24	
SBFL208-24G	1-1/2	40	6-29/32	5-11/16	3-15/16	27/32	9/16	1-7/16	1-13/16	9/16	3/8	1/2	SB208-24G	FL208	3.08	
208-25G	1-9/16		175	144	100	21	14	36	46	14.0	9.0		208-25G		3.04	
208G													208G		2.86	
SBFL209-26G	1-5/8	45	7-13/32	5-27/32	4-1/4	7/8	5/8	1-1/2	2-3/32	23/32	13/32	5/8	SB209-26G	FL209	4.33	
209-27G	1-11/16		188	148	108	22	16	38	53	18.0	10.2		209-27G			
209-28G	1-3/4												209-28G			
209G													209G			
SBFL210-30G	1-7/8	50	7-3/4	6-3/16	4-17/32	7/8	5/8	1-19/32	2-5/32	23/32	7/16	5/8	SB210-30G	FL210	4.80	
210-31G	1-15/16		197	157	115	22	16	40	54.6	18.0	10.9		210-31G			
210G													210G			
210-32G	2												210-32G			
SBFL211-32G	2	55	8-13/16	7-1/4	5-1/8	1	23/32	1-11/16	2-5/16	23/32	15/32	5/8	SB211-32G	FL211	6.69	
211-34G	2-1/8		224	184	130	25	18	43	58.5	18.0	11.8		211-34G			
211G													211G			
211-35G	2-3/16												211-35G			
SBFL212-36G	2-1/4	60	9-27/32	7-31/32	5-17/32	1-5/32	23/32	1-29/32	2-21/32	23/32	19/32	5/8	SB212-36G	FL212	8.27	
212G			250	202	140	29	18	48	67.8	18.0	14.9		212G			
212-38G	2-3/8												212-38G			
212-39G	2-7/16												212-39G			

* Full cover metal shroud seal standard. Full contact rubber seal (2RS suffix) optional.
Non-relubricatable units also available (remove G suffix). Contact factory.

