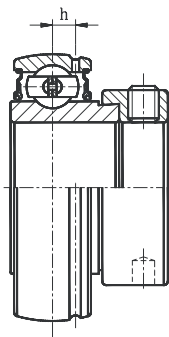
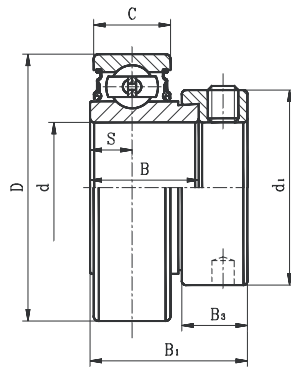


# BALL BEARING INSERTS

SA LIGHT DUTY ECCENTRIC LOCKING COLLAR TYPE  
CSA LIGHT DUTY CYLINDRICAL O.D. TYPE



SA  
(WITH G SUFFIX)



CSA



- Narrow inner ring bearing
- Lubrication groove with hole on collar side and additional oil hole on opposite side (G suffix).

Bearing No.	Shaft Dia. d		Dimension (in) (mm)								Basic load rating (lbs)		Weight (lb)
	(in.)	(mm)	D	C	B	B <sub>1</sub>	S	h	B <sub>3</sub>	d <sub>1</sub>	Dynamic	Static	
SA201G	1/2	12	1.5748	0.4724	0.7520	1.1260	0.2559	0.1417	0.5315	1.1260	2150	1070	0.31
201-8G		15											
202G		17											
202-10G		40											
203G	11/16	17	40	12	19.10	28.60	6.5	3.6	13.5	28.6	2150	1070	0.29
203-11G													
CSA104-12	3/4		1.6535	0.4724	0.6354	1.0402	0.2362		0.5197	1.2992	2100	1120	0.26
			42	12	16.14	26.42	6.0		13.2	33.0			
SA204-12G	3/4		1.8504	0.5512	0.8425	1.2165	0.2953	0.1575	0.5315	1.3110	2900	1500	0.40
204G	20		47	14	21.40	30.90	7.5	4.0	13.5	33.3			0.43
SA205-14G	7/8		2.0472	0.5906	0.8425	1.2165	0.2953	0.1693	0.5315	1.5000	3150	1770	0.46
205-15G	15/16		52	15	21.40	30.90	7.5	4.3	13.5	38.1			0.42
205G	25		52	15	21.40	30.90	7.5	4.3	13.5	38.1	3150	1770	0.42
205-16G	1		52	15	21.40	30.90	7.5	4.3	13.5	38.1	3150	1770	0.40
SA206-18G	1-1/8		2.4409	0.6299	0.9370	1.4055	0.3543	0.1969	0.6260	1.7520	4400	2500	0.77
206G	30		62	16	23.80	35.70	9.0	5.0	15.9	44.5			0.73
206-19G	1-3/16		62	16	23.80	35.70	9.0	5.0	15.9	44.5	4400	2500	0.68
206-20G	1-1/4		62	16	23.80	35.70	9.0	5.0	15.9	44.5	4400	2500	0.68
SA207-20G	1-1/4		2.8346	0.6693	1.0000	1.5315	0.3740	0.2244	0.6890	2.1890	5800	3400	1.23
207-21G	1-5/16		72	17	25.40	38.90	9.5	5.7	17.5	55.6			1.17
207-22G	1-3/8		72	17	25.40	38.90	9.5	5.7	17.5	55.6	5800	3400	1.12
207G	35		72	17	25.40	38.90	9.5	5.7	17.5	55.6	5800	3400	1.10
207-23G	1-7/16		72	17	25.40	38.90	9.5	5.7	17.5	55.6	5800	3400	1.06
SA208-24G	1-1/2		3.1496	0.7087	1.1890	1.7205	0.4331	0.2441	0.7205	2.3740	6660	4100	1.50
208-25G	1-9/16		80	18	30.20	43.70	11.0	6.2	18.3	60.3			1.48
208G	40		80	18	30.20	43.70	11.0	6.2	18.3	60.3	6660	4100	1.43
SA209-26G	1-5/8		3.3465	0.7480	1.1890	1.7205	0.4331	0.2559	0.7205	2.5000	7160	4700	1.68
209-27G	1-11/16		85	19	30.20	43.70	11.0	6.5	18.3	63.5			1.61
209-28G	1-3/4		85	19	30.20	43.70	11.0	6.5	18.3	63.5	7160	4700	1.52
209G	45		85	19	30.20	43.70	11.0	6.5	18.3	63.5	7160	4700	1.52
SA210-30G	1-7/8		3.5433	0.7874	1.1890	1.7205	0.4331	0.2559	0.7205	2.7520	7900	5200	1.83
210-31G	1-15/16		90	20	30.20	43.70	11.0	6.5	18.3	69.9			1.74
210G	50		90	20	30.20	43.70	11.0	6.5	18.3	69.9	7900	5200	1.74
SA211-32G	2		3.9370	0.9449	1.2756	1.9055	0.4724	0.2835	0.8150	3.0000	9800	6600	2.57
211-34G	2-1/8		100	24	32.50	48.40	12.0	7.2	20.7	76.2			2.35
211G	55		100	24	32.50	48.40	12.0	7.2	20.7	76.2	9800	6600	2.29
211-35G	2-3/16		100	24	32.50	48.40	12.0	7.2	20.7	76.2	9800	6600	2.22
SA212-36G	2-1/4		4.3307	0.9449	1.3150	1.9409	0.4724	0.3150	0.8780	3.3150	10700	7400	2.86
212G	60		110	24	33.40	49.30	12.0	8.0	22.3	84.2			2.64
212-38G	2-3/8		110	24	33.40	49.30	12.0	8.0	22.3	84.2	10700	7400	2.64
212-39G	2-7/16		110	24	33.40	49.30	12.0	8.0	22.3	84.2	10700	7400	2.40

\* Full cover metal shroud seal standard. Full contact rubber seal (2RS suffix) optional. Also available in free spinning design and/or with black oxide finish. Non-relubricatable units also available (remove G suffix). Contact factory.



www.abtbearing.com • 1-800-931-1860