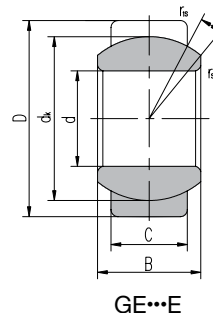


# SPHERICAL PLAIN BEARINGS – METRIC

## GE...C & GEH...C SERIES



### Specifications

- Sliding Surface: PTFE Lined Steel Outer on Chrome Plated Ball
- Maintenance Free - Low Friction

Part #	Ref #	Dimensions (mm)								Load Ratings kN		Weight LBS
		d	D	B	C	d <sub>k</sub>	r <sub>s</sub> min	r <sub>is</sub> min	α ≈	Dynamic	Static	
GE4C	GE4C	4	12	5	3	8	0.3	0.3	16	2.1	5.4	.007
GE5C	GE5C	5	14	6	4	10	0.3	0.3	13	3.6	9.1	.008
GE6C	GE6C	6	14	6	4	10	0.3	0.3	13	3.6	9.1	.009
GE8C	GE8C	8	16	8	5	13	0.3	0.3	15	5.8	14	.018
GE10C	GE10C	10	19	9	6	16	0.3	0.3	12	8.6	21	.024
GE12C	GE12C	12	22	10	7	18	0.3	0.3	10	11	28	.033
GE15C	GE15C	15	26	12	9	22	0.3	0.3	8	18	45	.059
GE17C	GE17C	17	30	14	10	25	0.3	0.3	10	22	56	.090
GE20C	GE20C	20	35	16	12	29	0.3	0.3	9	31	78	.145
GE25C	GE25C	25	42	20	16	35.5	0.6	0.6	7	51	127	.262
GE30C	GE30C	30	47	22	18	40.7	0.6	0.6	6	65	166	.359

Common Interchanges (25mm Bore): GE25UK, GE 25C, GE25-D, GE25EC, GE25HWA, SAR1-25, BM25

Part #	Ref #	Dimensions (mm)								Load Ratings kN		Weight LBS
		d	D	B	C	d <sub>k</sub>	r <sub>s</sub> min	r <sub>is</sub> min	α ≈	Dynamic	Static	
GEH4C	GEG4C	4	14	7	4	10	0.3	0.3	20	3.6	9.1	.011
GEH5C	GEG5C	5	16	9	5	10	0.3	0.3	21	5.8	14	.018
GEH6C	GEG6C	6	16	9	5	13	0.3	0.3	21	5.8	14	.013
GEH8C	GEG8C	8	19	11	6	16	0.3	0.3	21	8.6	21	.030
GEH10C	GEG10C	10	22	12	7	18	0.3	0.3	18	11	28	.046
GEH12C	GEG12C	12	26	15	9	22	0.3	0.3	18	18	45	.073
GEH15C	GEG15C	15	30	16	10	25	0.3	0.3	16	22	56	.110
GEH17C	GEG17C	17	35	20	12	29	0.3	0.3	19	31	78	.183
GEH20C	GEG20C	20	42	25	16	35.5	0.3	0.3	17	51	127	.340
GEH25C	GEG25C	25	47	28	18	40.7	0.6	0.6	17	65	166	.450
GEH30C	GEG30C	30	55	32	20	47	0.6	0.6	17	83	212	.670

Common Interchanges (100mm Bore): GE25FW, GE25BW-A



[www.abtbearing.com](http://www.abtbearing.com) • 1-800-931-1860