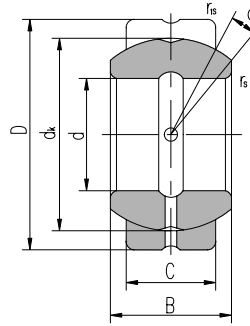
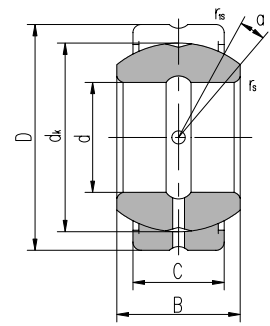


SPHERICAL PLAIN BEARINGS – INCH

GEZ SERIES



GEZ...ES



GEZ...ES-2RS

Specifications

- Sliding Surface: Steel on Steel - MoS₂ treated
- Single Fracture Design
- Relubricatable through annular grooves & oil holes in inner & outer rings (ES – Suffix)

Part #	Ref #	Dimensions (inches)								Load Ratings kN		Weight LBS
		d	D	B	C	d	r _{s min}	r _{is min}	α ≈	Dynamic	Static	
GEZ 008ES	GEZ12ES	0.5	0.875	0.437	0.375	0.707	0.006	0.024	6	13	41	.048
GEZ 010ES	GEZ15ES	0.625	1.0625	0.547	0.469	0.904	0.006	0.024	6	22	65	.079
GEZ 012ES	GEZ19ES	0.75	1.25	0.656	0.562	1.081	0.012	0.024	6	31	95	.12
GEZ 014ES	GEZ22ES	0.875	1.4375	0.756	0.656	1.258	0.012	0.024	6	42	127	.19
GEZ 100ES	GEZ25ES	1	1.625	0.875	0.75	1.437	0.012	0.024	6	56	166	.27
GEZ 104ES	GEZ31ES	1.25	2	1.093	0.937	1.788	0.024	0.024	6	86	260	.51
GEZ 106ES	GEZ34ES	1.375	2.1875	1.187	1.031	1.926	0.024	0.04	6	102	310	.77
GEZ 108ES	GEZ38ES	1.5	2.4375	1.312	1.125	2.154	0.024	0.04	6	125	375	.92
GEZ 112ES	GEZ44ES	1.75	2.8125	1.531	1.312	2.511	0.024	0.04	6	170	510	1.41
GEZ 200ES	GEZ50ES	2	3.1875	1.75	1.5	2.869	0.024	0.04	6	224	670	2.05
GEZ 204ES	GEZ57ES	2.25	3.5625	1.969	1.687	3.223	0.024	0.04	6	280	850	2.90
GEZ 208ES	GEZ63ES	2.5	3.9375	2.187	1.875	3.616	0.04	0.04	6	355	1060	4.07
GEZ 212ES	GEZ69ES	2.75	4.375	2.406	2.062	3.937	0.04	0.04	6	415	1250	5.28
GEZ 300ES	GEZ76ES	3	4.75	2.625	2.25	4.303	0.04	0.04	6	500	1500	6.82
GEZ 304ES	GEZ82ES	3.25	5.125	2.844	2.437	4.685	0.04	0.04	6	585	1760	8.36
GEZ 308ES	GEZ88ES	3.5	5.5	3.062	2.625	5.04	0.04	0.04	6	680	2040	10.60
GEZ 312ES	GEZ95ES	3.75	5.875	3.281	2.812	5.393	0.04	0.04	6	780	2360	12.76
GEZ 400ES	GEZ101ES	4	6.25	3.5	3	5.748	0.04	0.04	6	900	2650	15.40
GEZ 404ES	GEZ107ES	4.25	6.625	3.719	3.187	6.102	0.04	0.04	6	1000	3000	18.50
GEZ 408ES	GEZ114ES	4.5	7	3.937	3.375	6.476	0.04	0.04	6	1120	3400	21.60
GEZ 412ES	GEZ120ES	4.75	7.375	4.156	3.562	6.83	0.04	0.04	6	1250	3750	25.30
GEZ 500ES	GEZ127ES	5	7.75	4.375	3.75	7.204	0.04	0.04	6	1400	4150	29.70
GEZ 600ES	GEZ152ES	6	8.75	4.75	4.125	8.15	0.04	0.04	5	1730	5200	38.50

Also available: Maintenance Free – PTFE Lined – GEZ...TE 2RS, Stainless Steel – GEZ...TE/X

Common Interchanges (1" Bore): 10SF16, B16L, GE25ZO, SA2-16B, SBB16



www.abtbearing.com • 1-800-931-1860